

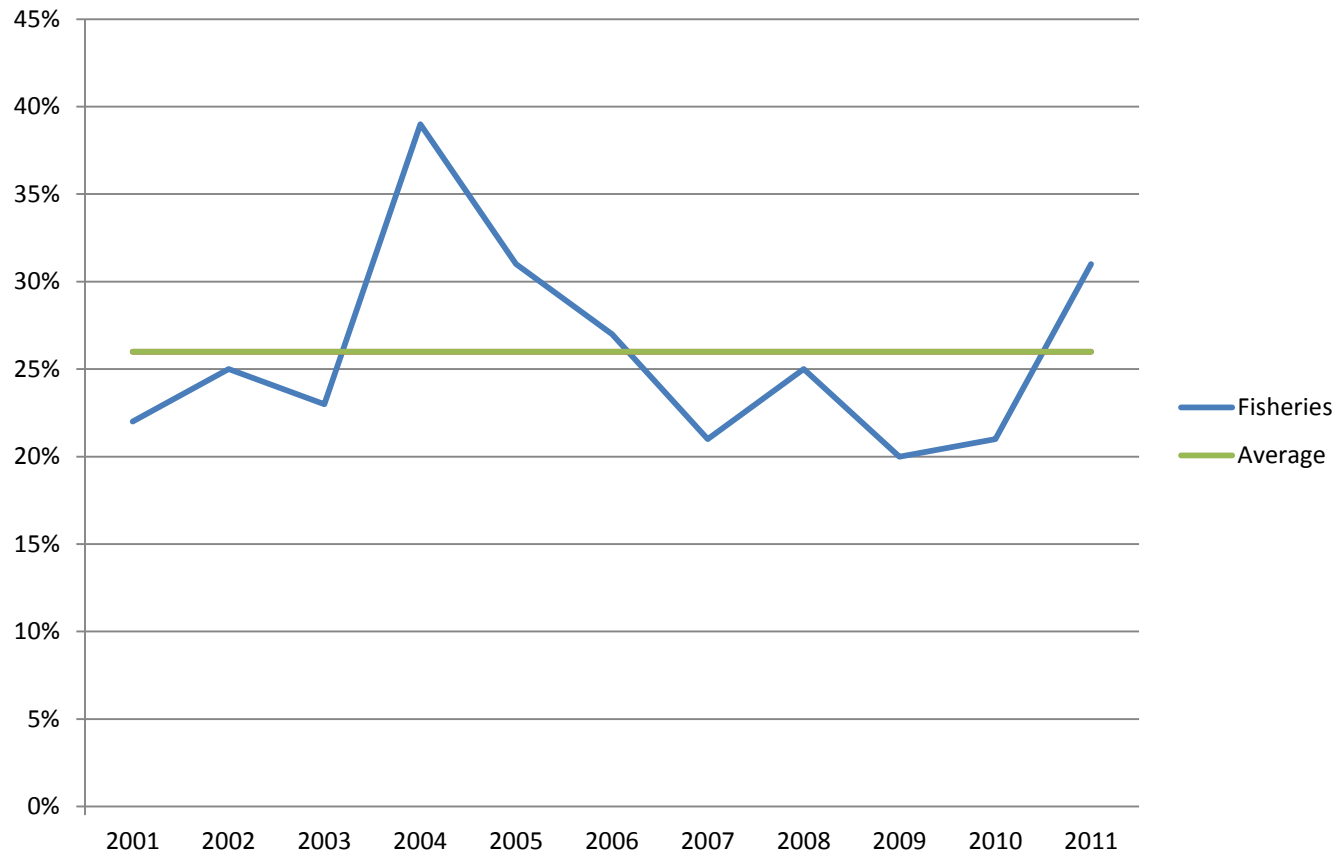
EFDAN 2013

ICELANDIC DEVELOPMENT COOPERATION WITH REGARDS TO FISHERIES

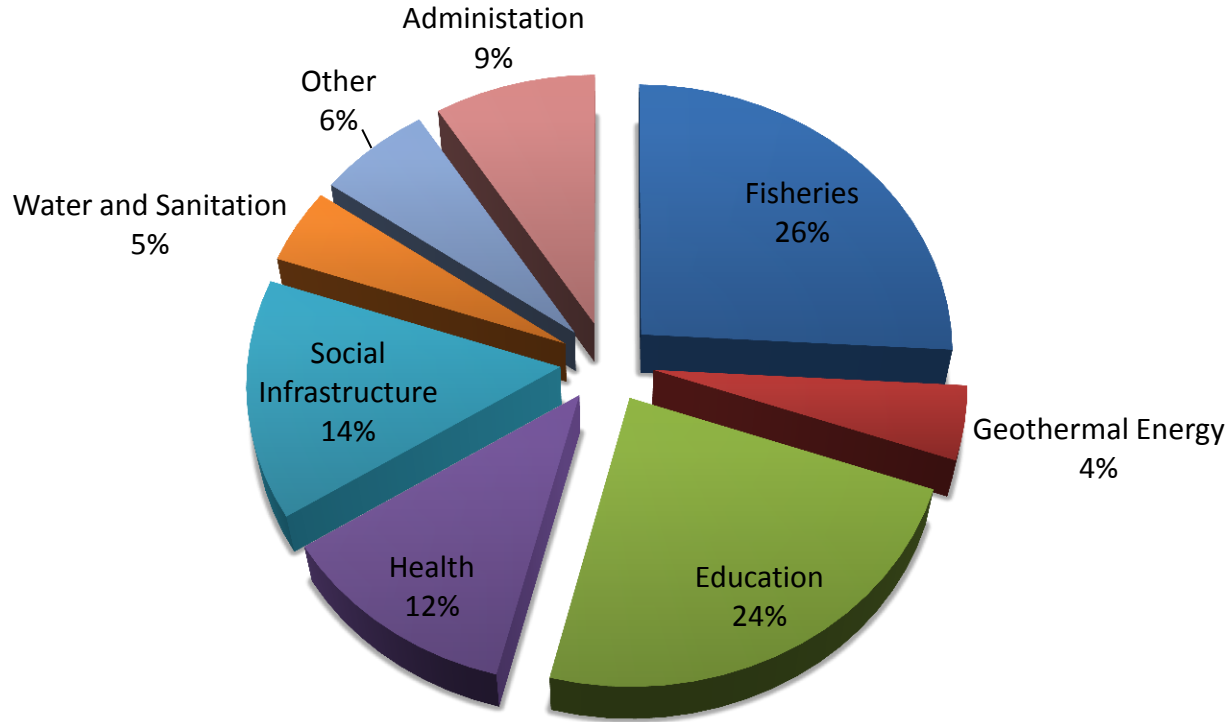
Arni Helgason, May 2013



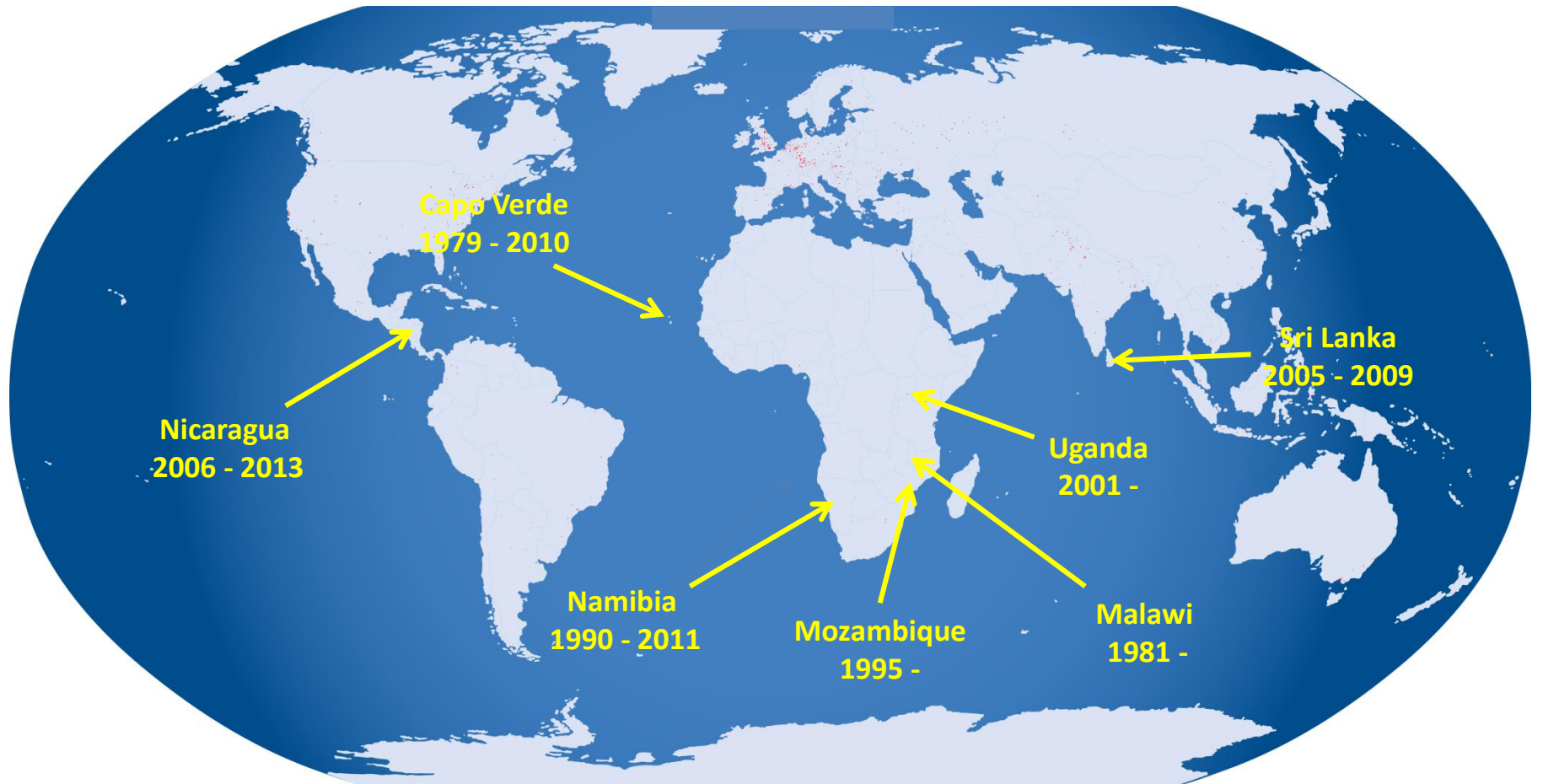
ICEIDA's proportional contribution towards Fisheries Development 2001 - 2011



Sectoral distribution of ICEIDA's contribution 2001 - 2011



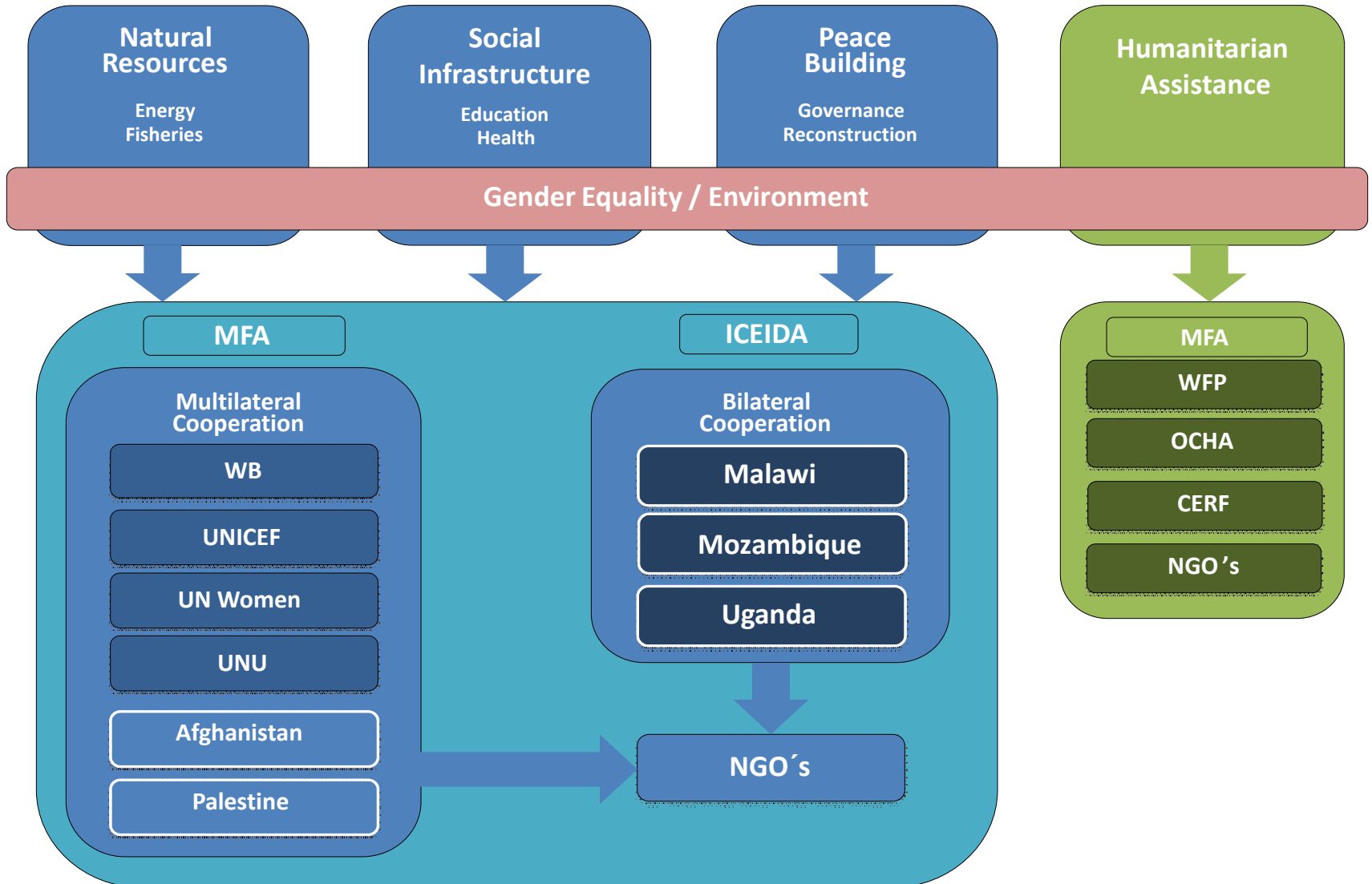
Icelandic Bilateral Development Cooperation 1981 - 2013



Strategy for Iceland's Development Cooperation 2013 - 2016

- “International Development Cooperation is one of the main pillars of Icelandic foreign policy. The fight against poverty, social injustice and inequality, and combatting world hunger, are the central pieces of our efforts. We furthermore focus on gender equality, peace and security, and areas where Icelandic specialization and knowledge provides the most value-added, such as fisheries and the harvesting of renewable energy”
- The Strategy for Iceland's Development Cooperation 2013 - 2016 is guided by the Millennium Development goals and various international agreements signed by Iceland, including the OECD Green Growth Strategy

Strategy for Iceland's Development Cooperation 2013 - 2016



Icelandic support to Fisheries Development 2013 - 2016

Assumptions	Goals	Actions
<ul style="list-style-type: none">• Development in Fisheries is an important contributing factor to economic development and progress.• Development in Fisheries contributes towards the achievement of the first MDG on fight against poverty and hunger	<ul style="list-style-type: none">• To achieve improved livelihood and food security in developing countries through sustainable fisheries, decrease in post-harvest losses and increased development of Fish Farming and Aquaculture.• To make Icelandic know-how and experience in Fisheries available for development in the Fisheries sector in developing countries	<ul style="list-style-type: none">• Coordination effort by MFA and ICEIDA in matters of natural resources and the environment in development cooperation• Active participation in Fisheries Policy Development in relevant international organisations• Iceland will focus on cooperation with FAO and WB in multilateral support to Fisheries development• In bilateral cooperation through ICEIDA the emphasis will be on Fisheries Development in Uganda and Mozambique• Continued contribution by the UNU-FTP in capacity building in developing countries as an integral part of a coordinated Icelandic development support in Fisheries.••

Revision of Iceland's Country Strategy Plans in Partner Countries

- CSP's for Iceland's partner countries are currently being revised in a demand driven process with active involvement and leadership by the partner governments and aim for alignment with existing national development in the partner country as well as with Iceland's new Development Cooperation strategy.
- The CSP development has been completed for Malawi, is in an advanced stage for Uganda and in the early stages for Mozambique.

Malawi

- The target for Iceland's development cooperation in Malawi is development of social infrastructure in Mangochi district with emphasis on education, public health and water and sanitation. The immediate implementation partner is the District Authority in Mangochi.
- Mangochi district is on the shores of Lake Malawi and Fisheries is an important source of food and livelihood for the people of the district. Iceland's support to Malawi will thus directly benefit people in fishing communities .

Mozambique

- Iceland's development cooperation in Mozambique will focus on natural resources utilization and development of social infrastructure, with specific emphasis on fisheries and education.
- Iceland will continue to contribute towards the operation of a Common Fund for Fisheries in Mozambique in collaboration with Norway. Further support within the CF as well as other avenues for supporting development in the Fisheries sector will be explored in the period of CSP.

Uganda

- Iceland's development cooperation with Uganda will focus on sustainable use of natural resources (fisheries) and human capital development (health and education). The immediate implementation partner will be the district authority with specific emphasis on fishing communities.
- The cooperation will aim for improved and sustainable fish exploitation, improved product quality and marketing, diversification of livelihoods and increased employment opportunities in fishing communities as well as improved health (WATSAN) and education (vocational training and skills development).

Thank you